

- 1
- 2
- 3
- 4
- 5
- 6
- 7
- 8
- 9
- 10
- 11
- 12
- 13
- 14
- 15
- 16
- 17
- 18
- 19

**PERNO**

Acciaio INOX AISI 303

**DENTI DI FISSAGGIO**

Acciaio INOX AISI 304

**MOLLA**

Acciaio INOX AISI 301.

**MANOPOLA**

Tecnopolimero a base poliammidica (PA) rinforzato fibra vetro, colore nero con fori per anello di aggancio.

**PULSANTE**

Tecnopolimero a base poliammidica (PA), colore rosso, finitura lucida.

**TEMPERATURA DI ESERCIZIO**

Da -20°C a +80°C.

**CARATTERISTICHE E APPLICAZIONI**

Perni autobloccanti in acciaio INOX GN 114.3 sono generalmente usati per fissaggi rapidi fra componenti o parti di lavorazione, in particolare quando devono continuamente essere rimossi e riposizionati.

**ACCESSORI**

Per ottimizzare l'impiego di questi perni autobloccanti sono disponibili:

- catenelle a sfere GN 111 (vedi pag. 611);
- cavetti di ritegno GN 111.2 (vedi pag. 612);
- cavetti di ritegno a spirale GN 111.4 (vedi pag. 613).

**ESECUZIONI SPECIALI A RICHIESTA**

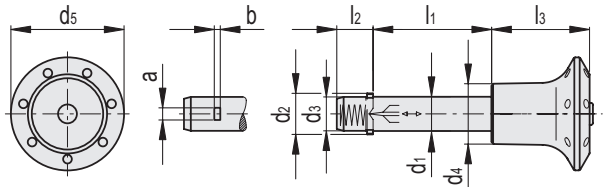
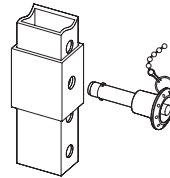
Dimensioni diverse.

**ISTRUZIONI D'USO**

Effettuando una pressione sul pulsante i due denti vengono liberati consentendo di inserire o disinserire il perno di bloccaggio.



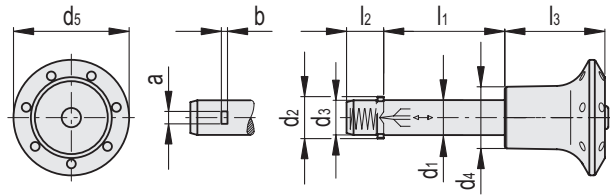
Esempio di applicazione



INOX STAINLESS STEEL

Codice	Descrizione	d1 -0.1	d2	d3	d4	d5	l1 +0.4	l2	l3	a	b	Resistenza al taglio [KN]	
GN.38795	GN 114.3-6-10	6	7.3 +0.5	5.9	15	30	10	7	21	2.3	0.5	17	12
GN.78301	GN 114.3-6-12	6	7.3 +0.5	5.9	15	30	12	7	21	2.3	0.5	17	12
GN.38796	GN 114.3-6-16	6	7.3 +0.5	5.9	15	30	16	7	21	2.3	0.5	17	13
GN.38797	GN 114.3-6-20	6	7.3 +0.5	5.9	15	30	20	7	21	2.3	0.5	17	14
GN.38798	GN 114.3-6-25	6	7.3 +0.5	5.9	15	30	25	7	21	2.3	0.5	17	14
GN.38799	GN 114.3-6-30	6	7.3 +0.5	5.9	15	30	30	7	21	2.3	0.5	17	15
GN.78302	GN 114.3-6-35	6	7.3 +0.5	5.9	15	30	35	7	21	2.3	0.5	17	16
GN.38800	GN 114.3-6-40	6	7.3 +0.5	5.9	15	30	40	7	21	2.3	0.5	17	17
GN.78303	GN 114.3-6-45	6	7.3 +0.5	5.9	15	30	45	7	21	2.3	0.5	17	18
GN.78304	GN 114.3-6-50	6	7.3 +0.5	5.9	15	30	50	7	21	2.3	0.5	17	18
GN.78305	GN 114.3-6-60	6	7.3 +0.5	5.9	15	30	60	7	21	2.3	0.5	17	23
GN.78306	GN 114.3-6-70	6	7.3 +0.5	5.9	15	30	70	7	21	2.3	0.5	17	23
GN.78307	GN 114.3-6-80	6	7.3 +0.5	5.9	15	30	80	7	21	2.3	0.5	17	27
GN.78311	GN 114.3-8-10	8	9.8 +0.5	7.9	15	30	10	8.4	21	2.8	0.6	35	26
GN.78312	GN 114.3-8-16	8	9.8 +0.5	7.9	15	30	16	8.4	21	2.8	0.6	35	29
GN.38755	GN 114.3-8-30	8	9.8 +0.5	7.9	15	30	30	8.4	21	2.8	0.6	35	29
GN.78313	GN 114.3-8-35	8	9.8 +0.5	7.9	15	30	35	8.4	21	2.8	0.6	35	29
GN.38757	GN 114.3-8-40	8	9.8 +0.5	7.9	15	30	40	8.4	21	2.8	0.6	35	32
GN.78314	GN 114.3-8-45	8	9.8 +0.5	7.9	15	30	45	8.4	21	2.8	0.6	35	34
GN.38759	GN 114.3-8-50	8	9.8 +0.5	7.9	15	30	50	8.4	21	2.8	0.6	35	35
GN.78315	GN 114.3-8-60	8	9.8 +0.5	7.9	15	30	60	8.4	21	2.8	0.6	35	41
GN.78316	GN 114.3-8-70	8	9.8 +0.5	7.9	15	30	70	8.4	21	2.8	0.6	35	47
GN.78317	GN 114.3-8-80	8	9.8 +0.5	7.9	15	30	80	8.4	21	2.8	0.6	35	50
GN.78318	GN 114.3-8-90	8	9.8 +0.5	7.9	15	30	90	8.4	21	2.8	0.6	35	52
GN.78319	GN 114.3-8-100	8	9.8 +0.5	7.9	15	30	100	8.4	21	2.8	0.6	35	54

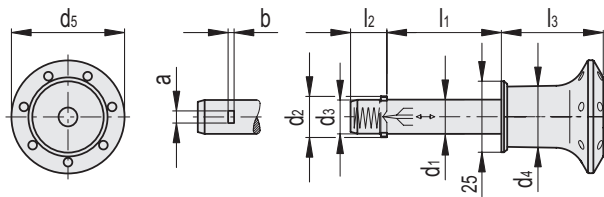
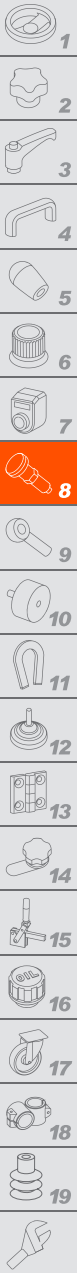
Elementi di posizionamento



INOX STAINLESS STEEL

Codice	Descrizione	d1 -0.1	d2	d3	d4	d5	l1 +0.4	l2	l3	a	b	Resistenza al taglio [KN]	
GN.78321	GN 114.3-10-15	10	11.7 +1	9.9	18	34	15	9.8	26	3.3	1	47	24
GN.38761	GN 114.3-10-20	10	11.7 +1	9.9	18	34	20	9.8	26	3.3	1	47	26
GN.38763	GN 114.3-10-25	10	11.7 +1	9.9	18	34	25	9.8	26	3.3	1	47	28
GN.38765	GN 114.3-10-30	10	11.7 +1	9.9	18	34	30	9.8	26	3.3	1	47	31
GN.78322	GN 114.3-10-35	10	11.7 +1	9.9	18	34	35	9.8	26	3.3	1	47	33
GN.38767	GN 114.3-10-40	10	11.7 +1	9.9	18	34	40	9.8	26	3.3	1	47	35
GN.78323	GN 114.3-10-45	10	11.7 +1	9.9	18	34	45	9.8	26	3.3	1	47	37
GN.38769	GN 114.3-10-50	10	11.7 +1	9.9	18	34	50	9.8	26	3.3	1	47	39
GN.78324	GN 114.3-10-60	10	11.7 +1	9.9	18	34	60	9.8	26	3.3	1	47	44
GN.78325	GN 114.3-10-70	10	11.7 +1	9.9	18	34	70	9.8	26	3.3	1	47	49
GN.78326	GN 114.3-10-80	10	11.7 +1	9.9	18	34	80	9.8	26	3.3	1	47	54
GN.78327	GN 114.3-10-90	10	11.7 +1	9.9	18	34	90	9.8	26	3.3	1	47	60
GN.78328	GN 114.3-10-100	10	11.7 +1	9.9	18	34	100	9.8	26	3.3	1	47	63
GN.78329	GN 114.3-10-110	10	11.7 +1	9.9	18	34	110	9.8	26	3.3	1	47	67
GN.78330	GN 114.3-10-120	10	11.7 +1	9.9	18	34	120	9.8	26	3.3	1	47	73
GN.78341	GN 114.3-12-20	12	13.7 +1	11.9	18	34	20	11.3	26	3.8	1	75	33
GN.38771	GN 114.3-12-25	12	13.7 +1	11.9	18	34	25	11.3	26	3.8	1	75	37
GN.38773	GN 114.3-12-30	12	13.7 +1	11.9	18	34	30	11.3	26	3.8	1	75	41
GN.78342	GN 114.3-12-35	12	13.7 +1	11.9	18	34	35	11.3	26	3.8	1	75	44
GN.38775	GN 114.3-12-40	12	13.7 +1	11.9	18	34	40	11.3	26	3.8	1	75	48
GN.78343	GN 114.3-12-45	12	13.7 +1	11.9	18	34	45	11.3	26	3.8	1	75	51
GN.38777	GN 114.3-12-50	12	13.7 +1	11.9	18	34	50	11.3	26	3.8	1	75	55
GN.38779	GN 114.3-12-60	12	13.7 +1	11.9	18	34	60	11.3	26	3.8	1	75	62
GN.78344	GN 114.3-12-70	12	13.7 +1	11.9	18	34	70	11.3	26	3.8	1	75	69
GN.78345	GN 114.3-12-80	12	13.7 +1	11.9	18	34	80	11.3	26	3.8	1	75	76
GN.78346	GN 114.3-12-90	12	13.7 +1	11.9	18	34	90	11.3	26	3.8	1	75	90
GN.78347	GN 114.3-12-100	12	13.7 +1	11.9	18	34	100	11.3	26	3.8	1	75	95
GN.78348	GN 114.3-12-110	12	13.7 +1	11.9	18	34	110	11.3	26	3.8	1	75	102
GN.78349	GN 114.3-12-120	12	13.7 +1	11.9	18	34	120	11.3	26	3.8	1	75	112
GN.38781	GN 114.3-16-30	16	18.7 +1	15.9	22	40	30	14.2	32	4.8	1.2	138	78
GN.38782	GN 114.3-16-35	16	18.7 +1	15.9	22	40	35	14.2	32	4.8	1.2	138	85
GN.38783	GN 114.3-16-40	16	18.7 +1	15.9	22	40	40	14.2	32	4.8	1.2	138	92
GN.78351	GN 114.3-16-45	16	18.7 +1	15.9	22	40	45	14.2	32	4.8	1.2	138	85
GN.38785	GN 114.3-16-50	16	18.7 +1	15.9	22	40	50	14.2	32	4.8	1.2	138	105
GN.38787	GN 114.3-16-60	16	18.7 +1	15.9	22	40	60	14.2	32	4.8	1.2	138	118
GN.38789	GN 114.3-16-70	16	18.7 +1	15.9	22	40	70	14.2	32	4.8	1.2	138	133
GN.78352	GN 114.3-16-80	16	18.7 +1	15.9	22	40	80	14.2	32	4.8	1.2	138	144
GN.78353	GN 114.3-16-90	16	18.7 +1	15.9	22	40	90	14.2	32	4.8	1.2	138	147
GN.78354	GN 114.3-16-100	16	18.7 +1	15.9	22	40	100	14.2	32	4.8	1.2	138	173
GN.78355	GN 114.3-16-110	16	18.7 +1	15.9	22	40	110	14.2	32	4.8	1.2	138	186
GN.78356	GN 114.3-16-120	16	18.7 +1	15.9	22	40	120	14.2	32	4.8	1.2	138	199
GN.78357	GN 114.3-16-130	16	18.7 +1	15.9	22	40	130	14.2	32	4.8	1.2	138	213
GN.78358	GN 114.3-16-140	16	18.7 +1	15.9	22	40	140	14.2	32	4.8	1.2	138	226
GN.78359	GN 114.3-16-150	16	18.7 +1	15.9	22	40	150	14.2	32	4.8	1.2	138	239





INOX STAINLESS STEEL

Codice	Descrizione	d1 -0.1	d2	d3	d4	d5	l1 +0.4	l2	l3	a	b	Resistenza al taglio [KN]	
GN.38849	GN 114.3-20-30	20	22.7 +1	19.8	22	40	30	14.8	33	4.8	1.2	228	125
GN.38850	GN 114.3-20-35	20	22.7 +1	19.8	22	40	35	14.8	33	4.8	1.2	228	136
GN.38851	GN 114.3-20-40	20	22.7 +1	19.8	22	40	40	14.8	33	4.8	1.2	228	147
GN.78361	GN 114.3-20-45	20	22.7 +1	19.8	22	40	45	14.8	33	4.8	1.2	228	158
GN.38853	GN 114.3-20-50	20	22.7 +1	19.8	22	40	50	14.8	33	4.8	1.2	228	169
GN.38855	GN 114.3-20-60	20	22.7 +1	19.8	22	40	60	14.8	33	4.8	1.2	228	191
GN.38856	GN 114.3-20-70	20	22.7 +1	19.8	22	40	70	14.8	33	4.8	1.2	228	214
GN.38857	GN 114.3-20-80	20	22.7 +1	19.8	22	40	80	14.8	33	4.8	1.2	228	234
GN.78362	GN 114.3-20-90	20	22.7 +1	19.8	22	40	90	14.8	33	4.8	1.2	228	258
GN.78363	GN 114.3-20-100	20	22.7 +1	19.8	22	40	100	14.8	33	4.8	1.2	228	277
GN.78364	GN 114.3-20-110	20	22.7 +1	19.8	22	40	110	14.8	33	4.8	1.2	228	302
GN.78365	GN 114.3-20-120	20	22.7 +1	19.8	22	40	120	14.8	33	4.8	1.2	228	326
GN.78366	GN 114.3-20-130	20	22.7 +1	19.8	22	40	130	14.8	33	4.8	1.2	228	350
GN.78367	GN 114.3-20-140	20	22.7 +1	19.8	22	40	140	14.8	33	4.8	1.2	228	368
GN.78368	GN 114.3-20-150	20	22.7 +1	19.8	22	40	150	14.8	33	4.8	1.2	228	395

Elementi di posizionamento

6